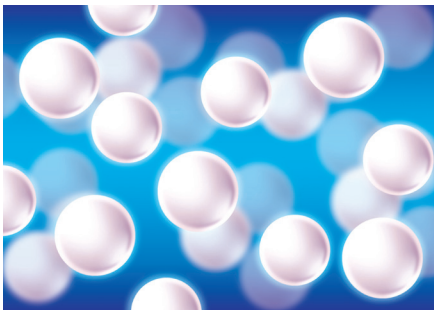
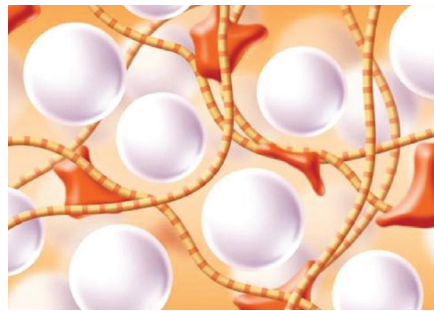


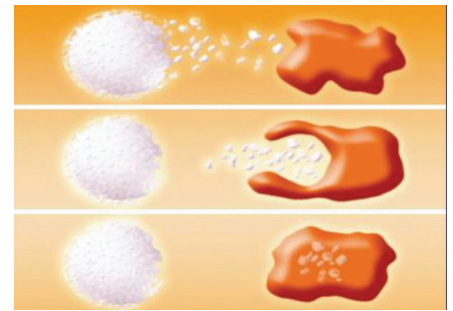
## Mechanism of Action



RADIESSE is comprised of Calcium Hydroxylapatite (CaHA) microspheres suspended in an aqueous gel carrier.<sup>1</sup>



Once injected, it provides immediate volume and correction but continues to work by stimulating the body to produce its own natural collagen.<sup>1</sup>



Over time, the gel is absorbed and the body metabolizes the CaHA microspheres leaving behind only your own natural collagen.<sup>1</sup>

## INDICATION

RADIESSE<sup>®</sup> injectable implant is FDA-approved for subdermal implantation for the correction of moderate to severe facial wrinkles and folds, such as nasolabial folds.

1. Berlin A, Hussain M, Goldberg D. (2008) Calcium Hydroxylapatite Filler (RADIESSE<sup>®</sup>) for Facial Rejuvenation: A Histologic and Immunohistochemical Analysis. *Dermatologic Surgery*, Volume 34, S64-S67.